



## ***ChromaVision – Green Tile Testing Guide***

---

### ***Purpose of the guide:***

The green tile can be used to identify whether a ChromaVision device has drifted since production or last certification. This guide explains how you can find out if your ChromaVision device needs maintenance.

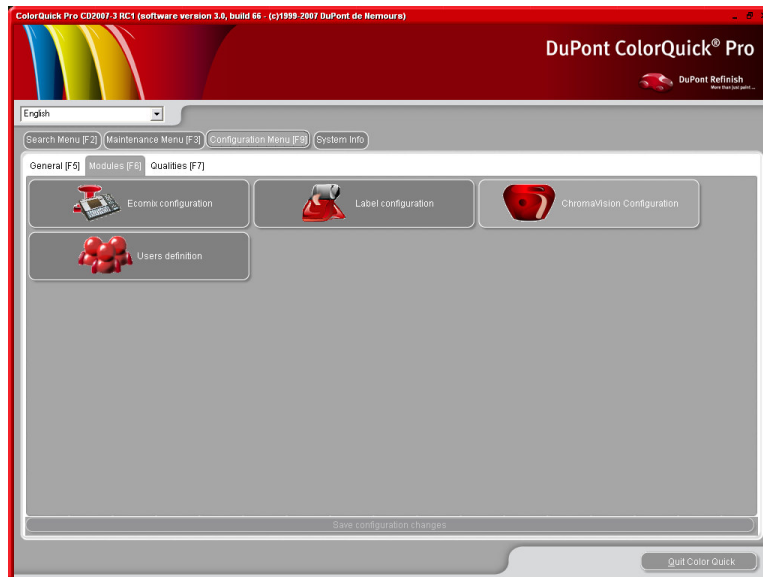
- ? When should you test your ChromaVision device?
- ! We recommend you check it every 6 months or when you experience problems with the device.

### ***Important note:***

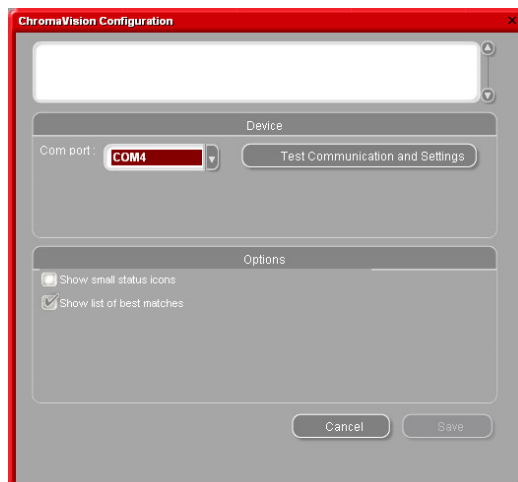
Even though we made sure that the colour we used for the Green Tile is very stable we recommend keeping the cover closed and the Green Tile preferably in the envelope. To check the device, make sure that you have the correct green tile for your ChromaVision at hand (simply compare the serial number printed on the label).

*Follow below steps:*

1. In ColorQuick Pro, go to “Configurations Menu F9” select the tab “Modules F6” and open the ChromaVision Configuration menu:



2. Perform the communications test:



3. When the communication test is successful, press the “Green Tile Testing” button:

Communication test - Extra settings

Communication test successful!

Device: BYK 6320 3.11.1

Serial: 1010751

Date: 18/06/2007 13:22:01

Language: EN English

Extra Options:

- ☒ Allow joblist
- ☒ Browse measurements

Display: Default

Enter job name: YES

Browse measurements: YES

Lab mean: Single

Enter name: YES

Battery test: OK

Days since last calibr.: 19

Measurement count: 392

Calibration count: 6504006

Catalog number: 6320

Erase readings Green Tile Testing Cancel Save

4. If this is the first time that you enter the “Green Tile Testing” you have to enter the values printed on the label attached to the Green Tile (make sure the serial number of the Green Tile is matching the one of the ChromaVision):

Green Tile Testing

Please Enter L,a,b values (of 45 degrees) printed at the back of the Green Tile

L: 66.22 a: -9.6 b: 8.98

Test Green Tile Cancel

**Important note:** “-“ needs to be entered same as printed on the label!

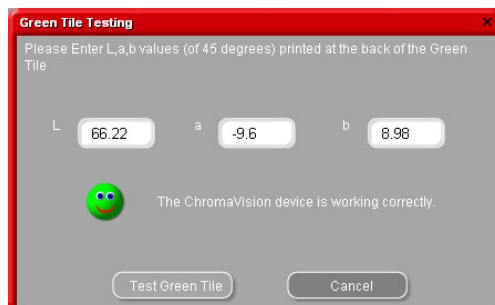
5. After pressing “Test Green Tile”, following screen appears:



- a. Now detach the cable from ChromaVision and calibrate ChromaVision.
  - b. Take a reading of the Green Tile (make sure that you finalise this reading (back in the main menu of the device)).
  - c. Then re-attach the cable.
6. Now press “OK”. The green tile measurement will be read by the software and a comparison to the initial values is calculated.

**The possible results are:**

**Green:** The ChromaVision device is working correctly



**Red:** The ChromaVision device is out of range  
Please send the device back for service.

